

CONVERTING ONE-WAY STREETS TO TWO-WAY



2024
PARTNERING
CONFERENCE
— acec-ky —
kytc • fhwa

September 4, 2024

How did we get here?



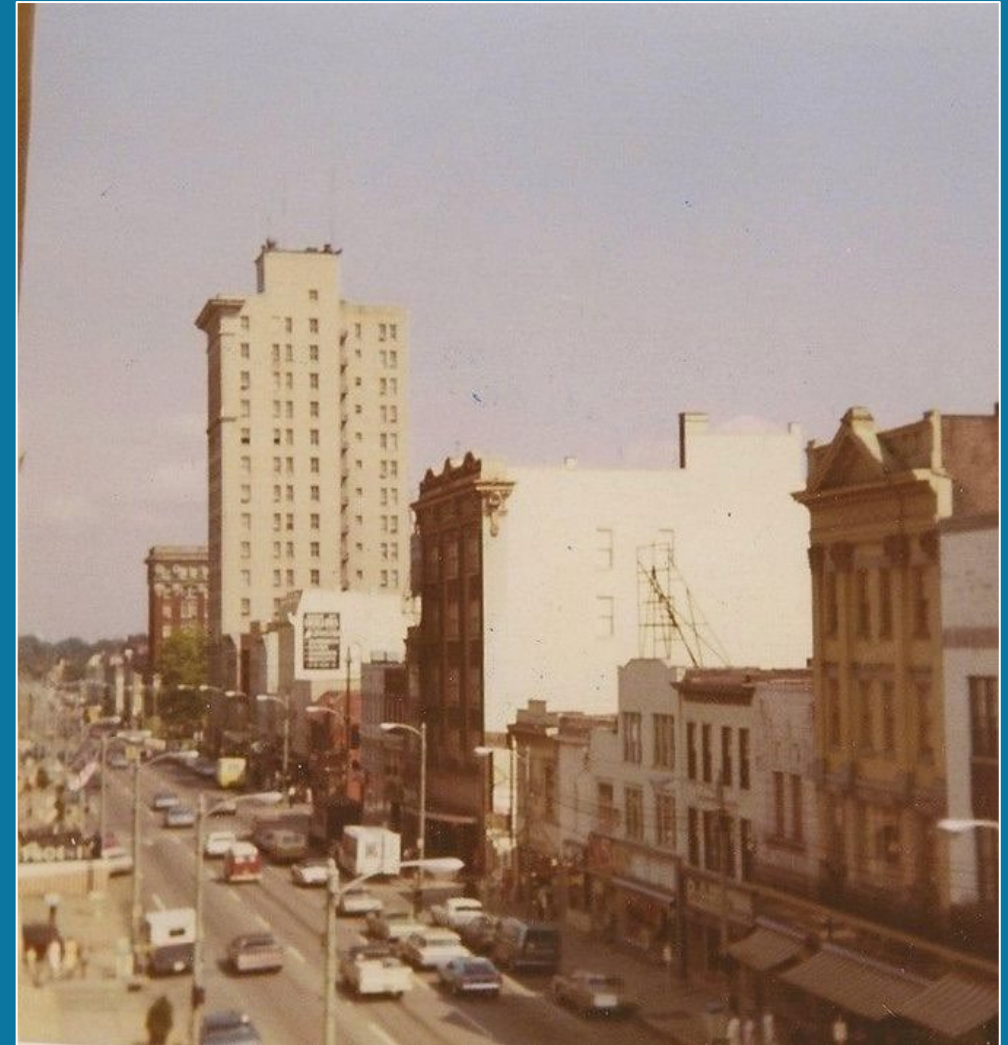
Downtown Louisville
1940's and 1950's

How did we get here?



Downtown Lexington
1940's and 1950's

How did we get here?



Mid 1950's to 1960's populations moved to the suburbs, but many continued to work downtown. Streets were converted to one-way to make commuting to suburbs easier.

How did we get here?



Especially in the 70's & 80's, downtown centers eventually became ghost towns after dark.

City Officials – “Now What?”

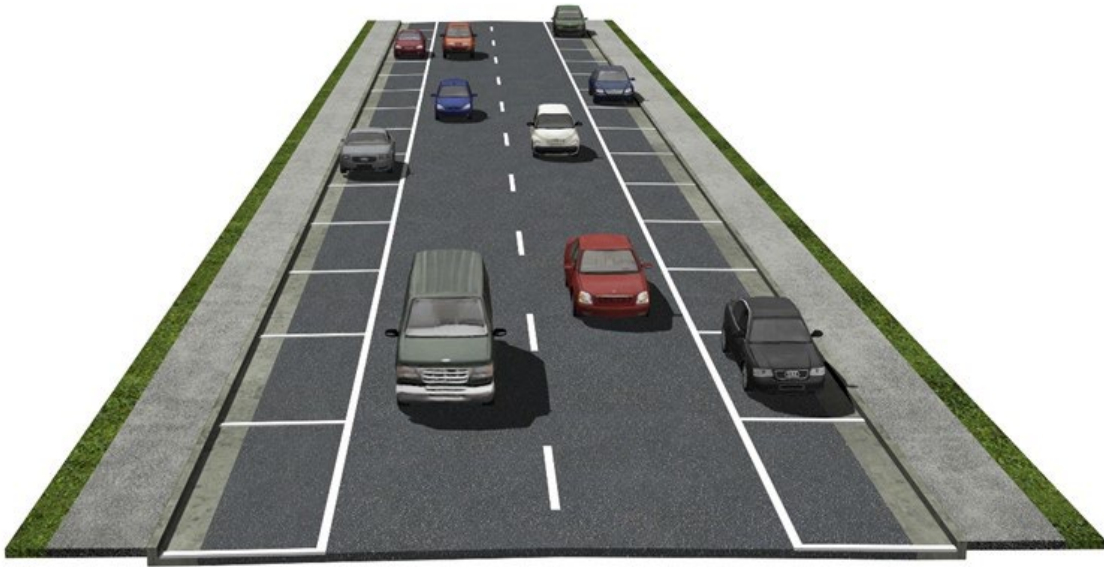


WHY TWO-WAY? WHY NOT ONE-WAY?



- **Safety** - Slower vehicles encourage bicycles and pedestrians
- **Economic** - Revitalization of downtown as a destination, not a peak-hour commuter route
- **Efficiency** - Direct path for vehicles to reach destination

Feasibility Study



Existing



Proposed

Sample Feasibility Study – Newport, KY



The objective of the Newport Two-Way Feasibility Study is to determine the feasibility of the conversion from one-way couplets to two-way systems in Newport. The couplets are Monmouth Street and York Street (between 3rd Street and 11th Street) and 4th Street and 5th Street (between Roundabout and Washington Avenue).

Sample Feasibility Study – Existing Conditions Analysis



Existing Conditions Analysis



Two-Way Conversion Considerations – Cost/Schedule

December 2016



September 2017



Spring Street
New Albany, IN.

Two-Way Conversion Considerations – Cost/Schedule

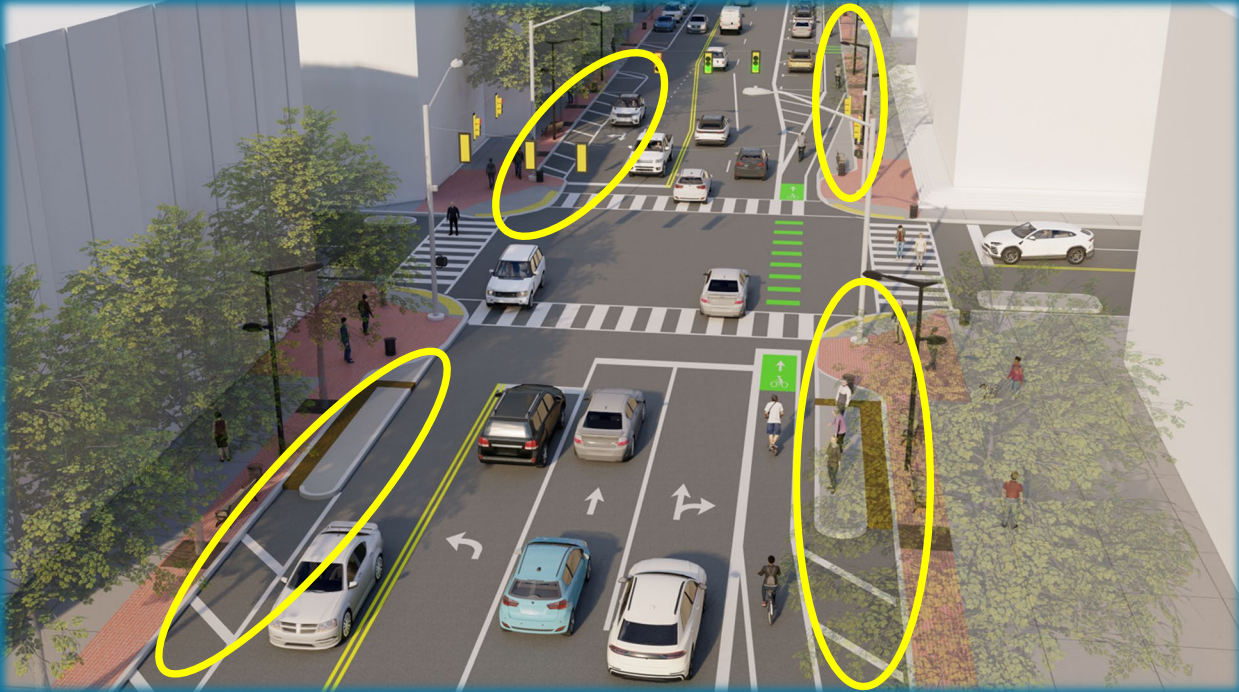


Two-Way Conversion Considerations - Parking

Before



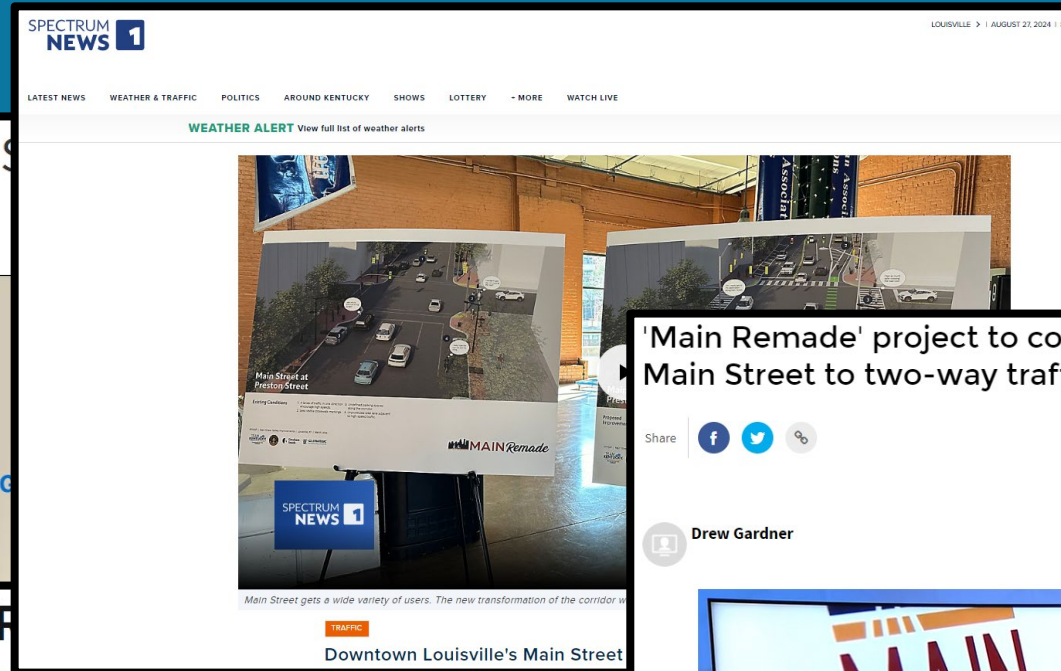
After



Two-Way Conversion Considerations - Stakeholders

Directional changes coming to Louisville's Main Street

Richard Essex Jun 4, 2024 Updated Jun 5, 2024



'Main Remade' project to convert much of Louisville's Main Street to two-way traffic

Share   

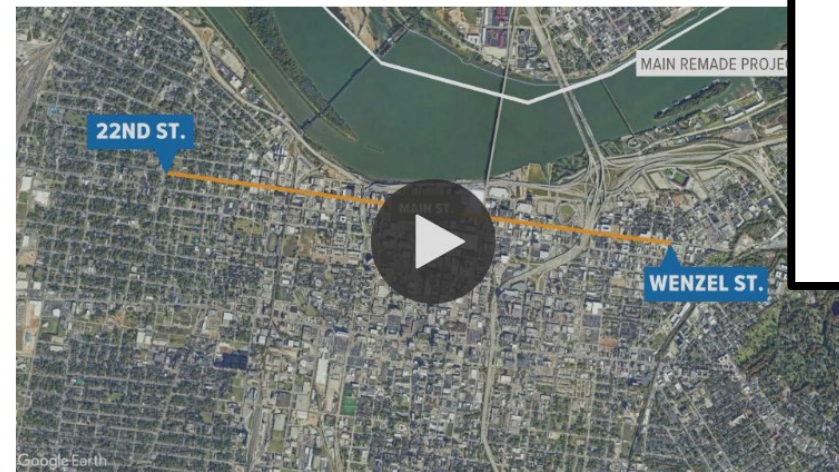
 Updated: 11:13 PM EDT Mar 19, 2024

Infinite Scroll Enabled 

 Drew Gardner



'Main Remade' project aims to improve safety on Main Street in Louisville

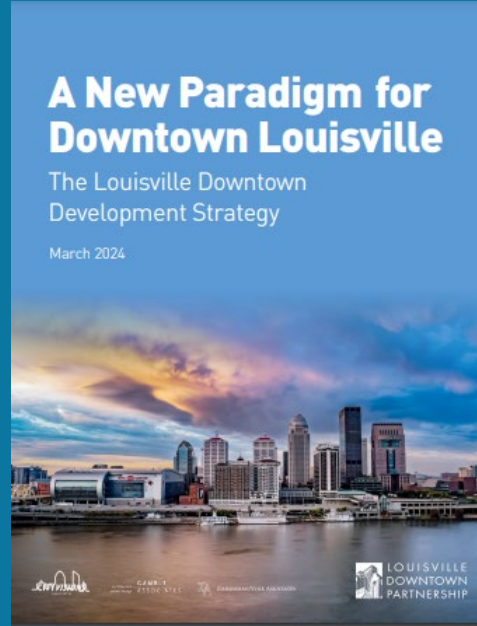


The project will be broken up into three phases: east, central and west.

2024
PARTNERING
CONFERENCE
acec-ky
kytc * fhwa

Two-Way Conversion Considerations - Additional

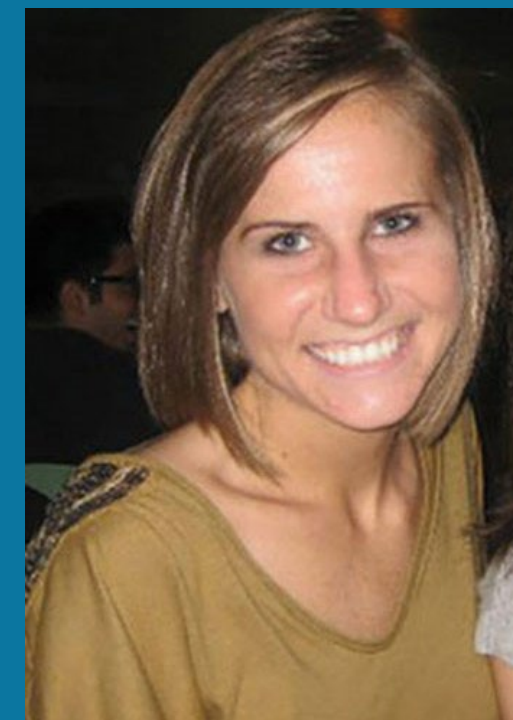
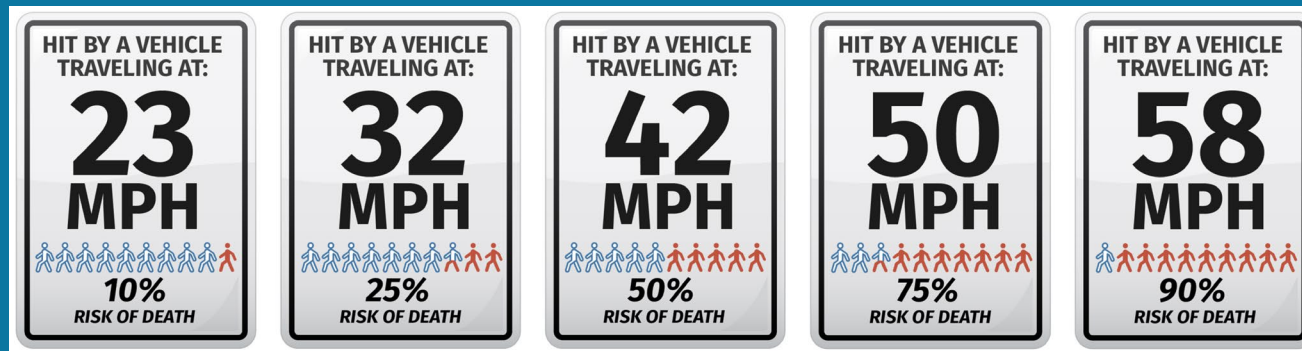
- Revitalization/Economic Development
- Environmental
- On-street Deliveries
- Transit
- Design Vehicles
- Surrounding Roadway Network
- Other Planned Projects
- Special Conditions



Two-Way Conversion Considerations - Safety



VISION ZERO LOUISVILLE



2024 PARTNERING CONFERENCE
acec-ky
kytc * fhwa

Questions?

